

Figure 1

1. INTRODUCTION

This instruction sheet provides termination procedures for the SL Series 110Connect modular jacks (Cat 3, Cat 5e, and Cat 6).

NOTE

All dimensions are in millimeters [with inches in brackets]. Figures are not drawn to scale.

Reasons for reissue of this sheet are provided in Section 4, REVISION SUMMARY.

2. DESCRIPTION

The jacks accept four pair, twisted-pair cable with 22 through 24 AWG solid conductors and 24 AWG stranded conductors. The maximum conductor insulation diameter is 1.27 [.050].

3. TERMINATION

- Strip back only as much cable jacket as necessary to perform termination. See Figure 2.

NOTE

Generally, a strip length of 50.8 [2.00] maximum will meet the needs of most applications, depending on method of termination.

NOTE

If using the optional bend-limiting strain relief, slide it over cable jacket as shown in Figure 2.

NOTE: Not to Scale

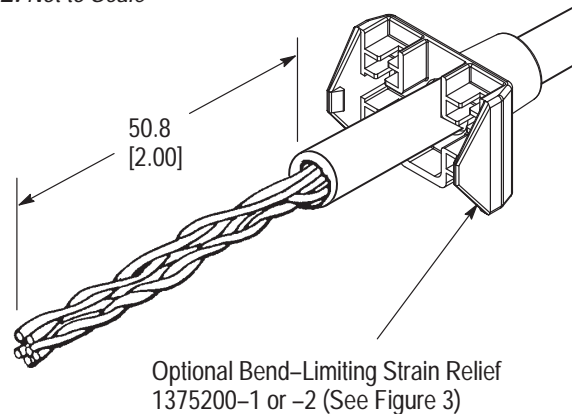


Figure 2

NOTE

Keep wire pairs twisted to within 75 [3] of termination for Cat 3 jacks, or 12.7 [.50] for CAT 5e Jacks, or 6.0 [.24] for CAT 6 Jacks.

- Align and lace a color-coded wire pair with the appropriate slots as indicated by the color coding on the wiring label (use minimum slack while maintaining twist, as indicated in Figure 3).

NOTE

Wire termination requires the use of Impact Tool 558418-1.

CAUTION

Set impact setting for low-impact. Orient tool so cutoff blade is on outside of block and vertical.

- Use tool to punch wires down into slot and cut off excess wire. Remove loose wire pieces.
- Repeat Steps 2 and 3 with all wire pairs.
- Slide bend-limiting strain relief (if used) onto jack. Latches on strain relief will engage tabs on rear of jack as indicated in Figure 3.

4. REVISION SUMMARY

Per EC 0990-1704-03:

- Added 24 AWG stranded conductors

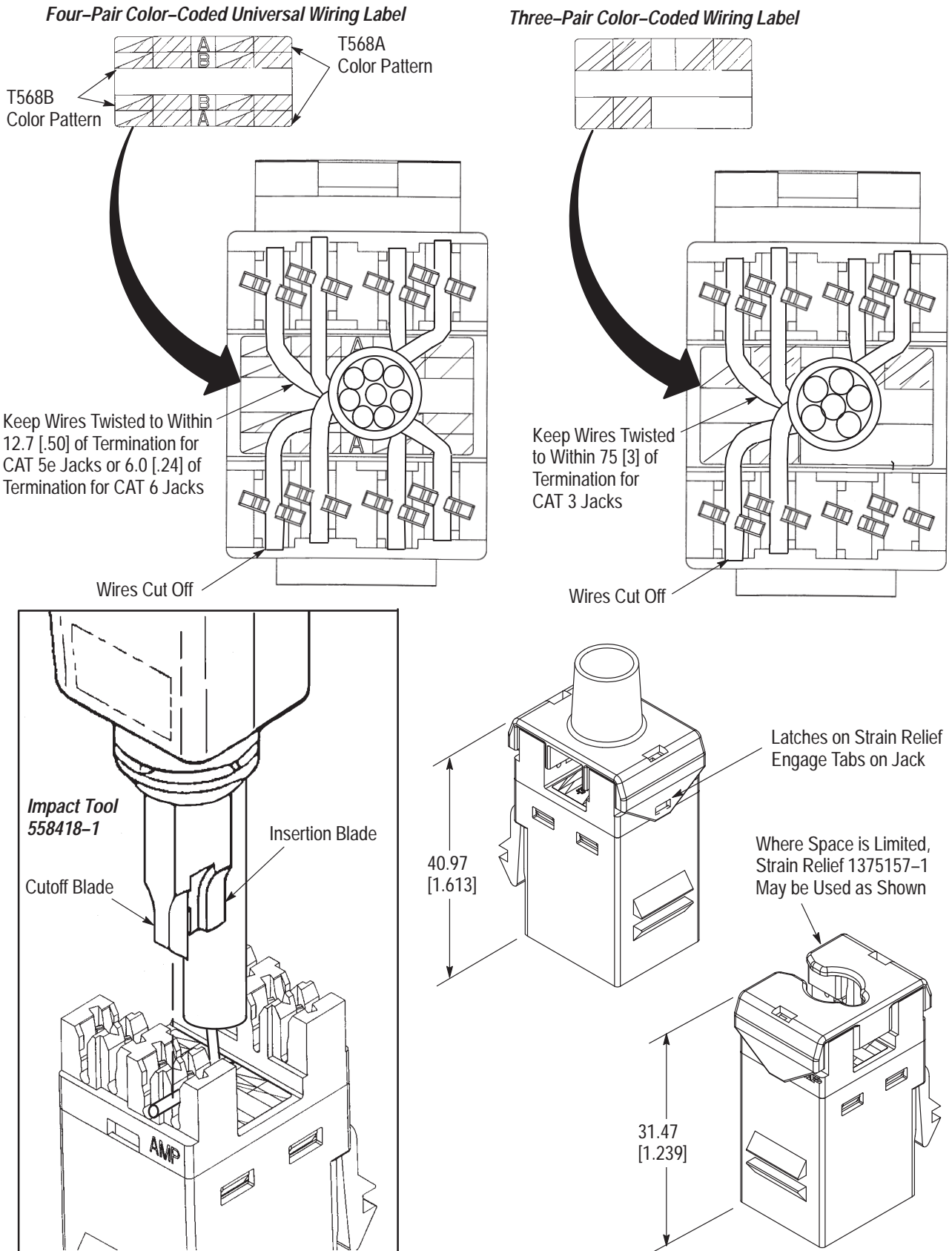


Figure 3